



TML GROUP

Technical Datasheet

UNIDACHS

7

**Operating weight: approx. 33,000 kg,
Diesel drive with 180 kW, alternatively electric drive with 132 kW
Telescopic stroke: 4,000 mm**

» Technical specifications

740

Crawler Undercarriage	
Crawler chain	B5
Base plates	Triple grouser, HD, 600 mm
Gradability	44 %
Draw bar pull	180 kN
Ground pressure	7.7 t/m ² (600 mm base plates)
Drive system	Stepless hydrostatic traction drive, independent drive for each track side
Brakes	Spring set, hydraulically released wet multi disc brake
Parking brake	Wet multi-disc brake, wear-free, automatic activation when joystick is in neutral position
Travel speed	0 – 2.2 km/h, (4.7 km/h optional)

Hydraulic System	
Type	Load - Sensing
Operating pressure	270 Bar
Hydraulic oil tank capacity	390 Liter
Safety system	Pipe break protection on the lifting cylinders
Pump type	Variable displacement pump
Filtering	Hydraulic return filter and tank breather filter
Control block	Additional working circuits for attachments optionally available

Electro Drive 3-Phase (alternative)	
Rated power	132 kW at 50 Hz
Voltage	380 V, 400 V, 500 V
Frequency	50 Hz or 60 Hz

Diesel Drive	
Diesel engine (EU/USA)	Deutz AG, 6-cylinder, TCD 6.1, Diesel engine with Diesel oxidation catalytic converter and particulate filter with DEF injection, emission stage EU V / USA Tier 4, output 180.0 kW
Diesel engine (non EU/ USA)	Deutz AG, 6-cylinder, TCD 6.1 (EDG), diesel engine without exhaust gas aftertreatment, without DEF injection, emission stage EU IIIA / USA Tier 3, output 168.0 kW
CO ₂ -neutral operation	Possible with paraffinic diesel fuel according to EN 15940
Rated power	180 kW (EU/USA) 168 kW (non EU/USA)
Engine capacity	6,100 cm ³
Torque	1,000 Nm at 1,450 min ⁻¹
Cooling	Fluid
Air Filter	2-stage, with electrical contamination indicator
Fuel tank capacity	360 Liter

740

» Technical specifications

Cradle & Telescopic Boom

Telescopic boom with integrated rotating unit. Fully enclosed design to protect the hoses and the tool cylinder against radiation heat and falling objects.

Max. range	12,000 mm
Telescopic stroke	4,000 mm (732 – 3,200 mm, 736K – 3,600 mm, 737 – 3,700 mm)
Rotation	360°, continuous endless
Boom rotation speed	0 – 14 min ⁻¹
Boom rotation torque	28.5 kNm
Pull and push force	160 / 170 kN
Tool ripping force	136.5 kN
Boom guide rollers	20 pcs. (736K – 9 pcs.)

Upper Structure

Hydrostatic slew drive with axial piston motor and planetary gear.

Rotation	360°, continuous, endless
Rotation speed	0 – 7.5 min ⁻¹
Slewing brake	Spring set, hydraulically released wet multi disc brake



UNIDACHS 740

740

» Technical specifications

Lighting

Upper structure front	2 x LED headlights
Upper structure rear	Optional
Cradle	1 x LED headlight
Surrounding warning light	1 x Yellow

Electrical System

System voltage	24 V
Battery	2 Pcs.

Paint

Undercarriage	Black, RAL 9005
Upper structure & Telescopic boom	Yellow, RAL 1007

Radio Remote Control (optional)

Operation via 2 joysticks. Illuminated colour display. Waist belt carrying system.

Weight	4.5 kg
--------	--------

Operator's Cabin

Cabin	Closed cabin, FOPS - Falling Object Protective Structure, robust safety front guard with fine-wire mesh in front of the wind screen against radiation heat
Heating and air conditioning	Air conditioning and heating installed
Driver's seat	Mechanically spring suspended, fully adjustable comfort seat. Joysticks are mounted on armrest, lap belt, pilot safety lever on driver's seat.
Glazing	Heat-resistant safety glass
Monitoring	Display: Indication of current machine data, automatic monitoring of operating status
Surround noise level LWA	103 db (A)
Inside cab noise level LpA	75 db (A)



Operator's cabin



RELIABLE



PRODUCTIVE

UNIDACHS - The best answer to extreme conditions

Crawler Undercarriage	7 Series Heavy Metal	7 Series Hard Rock
Chain sealed with lifetime lubrication	●	●
Base plates, triple grouser, HD, 600 mm	●	●
Base plates, triple grouser, HD, 800 mm	○	○
Rubber vulcanized tracks	○	○
Rubber pads for base plates	○	○
2nd driving stage for two driving speeds	○	○
Towing circuit	○	○
Front clearing blade	○	○
Drive Unit Options	7 Series Heavy Metal	7 Series Hard Rock
Diesel engine, Deutz AG, 6-cylinder, TCD 6.1, 180 kW, EU V / USA Tier 4 (EU/USA)	●	●
Diesel engine, Deutz AG, 6-cylinder, TCD 6.1 (EDG), 168 kW, EU IIIA / USA Tier 3 (non EU/USA)	●	●
Electric drive, 132 kW with 25m cable	○	○

Upper Structure	7 Series Heavy Metal	7 Series Hard Rock
Rotation 360°, continuous endless	●	●
Central lubrication system for upper structure and cradle	○	○
Arctic Pack (hydraulic oil, engine and fuel preheating)	○	○
Rear and side bumper	○	○
Fire extinguishing system	○	○
Hand-held fire extinguisher (6 kg) in protective box, attached to the upper structure	○	○
Refuelling pump	○	○
Connection for external starting aid	○	○
Additional emergency stop switch	○	○
Main isolator switch for electrical system	○	○
Service doors lockable	●	●
Crane lifting points	●	●
Engine compartment lighting	○	○

Key: ● Standard ○ Option



UNIDACHS 740



UNIDACHS 740

UNIDACHS Series 7

Operator's Cabin	7 Series Heavy Metal	7 Series Hard Rock
Lockable, spacious, sound-insulated driver's cab manufactured in accordance with the latest ergonomic requirements	●	●
Large high-resolution control unit with colour display, versatile setting, control and monitoring options	●	●
Air conditioning	●	●
Comfort seat with lap belt	●	●
Safety glass windows	●	●
FOPS safety guard, front screen	●	●
Heat protection wire mesh screen	●	○
Storage compartments	●	●
FOPS safety guard, roof	○	○
Hand-held fire extinguisher (cabin)	●	●
First aid kit	●	●
Tool kit	●	●
Auxiliary heating system	○	○
Dust protection system	○	○
Bullet proof front screen	○	○
Bullet proof roof window	○	○
Tiltable driver's cabin (30° tiltable)	○	○
Elevating driver's cabin	○	○
Camera system 270° Bird View (consisting of 3 cameras)	○	○
Camera system (1x rear camera / 1x right hand side camera)	○	○
Additional radio remote control	○	○

Cradle & Telescopic Boom	7 Series Heavy Metal	7 Series Hard Rock
Telescopic stroke 4,000 mm	●	●
Rotation 360°, continuous, endless	●	●
Telescopic boom with flange headpiece	○	○
Dirt deflector between main boom and inner boom	○	●
Covers for boom guide rollers	○	○
Additional hose tray for hydraulic or pneumatic tools	○	○
Bumper plates main Boom	○	●
Central lubrication system cradle	○	○
Overload warning system	○	○

Lighting	7 Series Heavy Metal	7 Series Hard Rock
Lighting package: 2x LED work lights upper structure front, 1x LED work light cradle, 1x LED rotating beacon yellow	●	○
Extended lighting package: 2x LED worklights cabin roof, 1x LED worklight cradle	○	○
Lighting package: 2x LED worklights upper structure front, 2x LED worklights upper structure rear, 2x LED worklights cab roof, 3x LED worklights cradle, 1x LED rotating beacon yellow	○	●
Additional LED lighting	○	○
Blue spot light in the rear area	○	○
Safety perimeter ground marking Red Light Working Projection	○	○

Key: ● Standard ○ Option



COMFTABLE



PRECISE

UNIDACHS Series 7

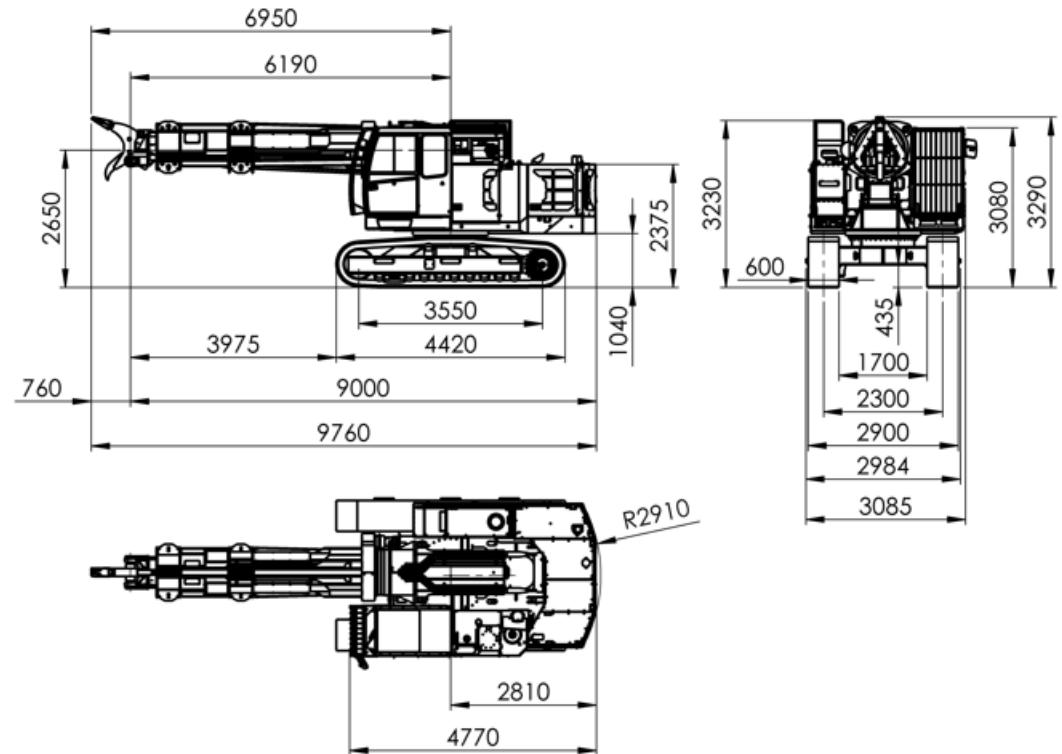
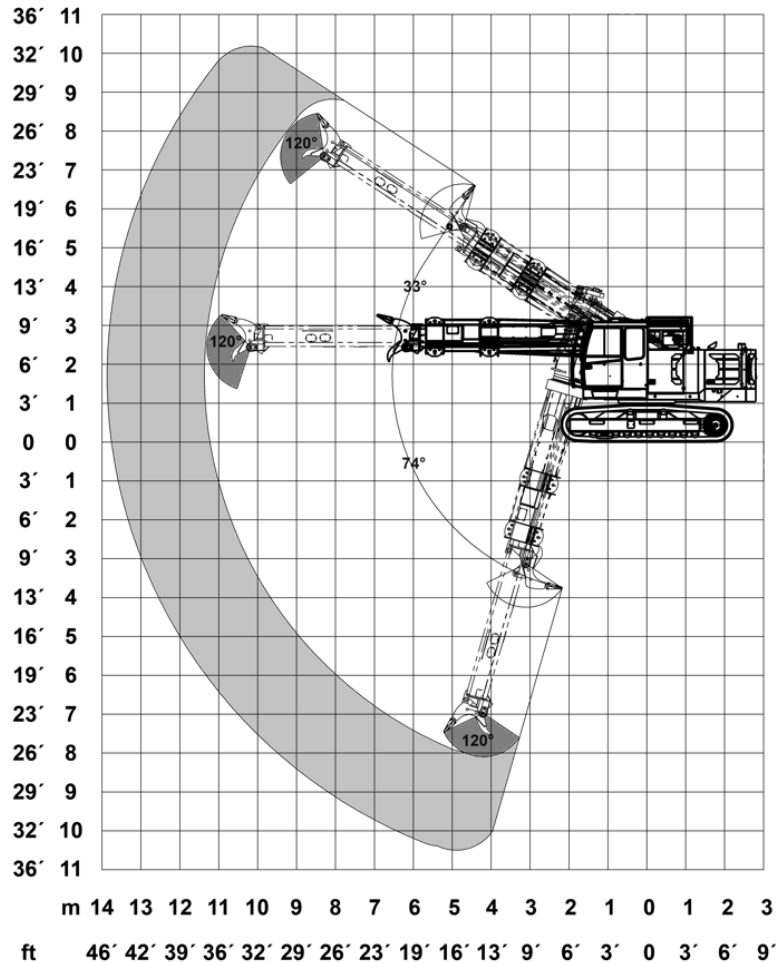
Radio Remote Control (optional)	7 Series Heavy Metal	7 Series Hard Rock
Remote control via radio transmission	●	●
Remote control via cable	●	●
2 Joysticks	●	●
Illuminated colour display	●	●
Operating mode selector switch	●	●
Single-hand drive mode	●	●
Tool control	●	●
Radio frequency 16 channels 433/434 MHz	●	●
Radio frequency 16 channels 535 MHz	○	○
Radio frequency 16 channels 461 MHz	○	○
Emergency stop button on transmitter	●	●
Hip belt carrying system	●	●
Accessories & Extras	7 Series Heavy Metal	7 Series Hard Rock
Tool kit	●	●
Emergency first aid kit	●	●
Storage compartments	●	●
Remote control charger	●	●
Flame retardant hydraulic fluid	○	○
Camera system	○	○
Software	7 Series Heavy Metal	7 Series Hard Rock
TML Connect	○	○

Attachment Tools	7 Series Heavy Metal	7 Series Hard Rock
Boom extension integrated	○	○
Boom extension bolted	○	○
Single ripper hook	○	○
Double ripper hook	○	○
Hydraulic hammer	○	○
Pneumatic hammer	○	○
Rotary drum cutter	○	○
Demolition shears	○	○
Hydraulic grab	○	○
Various sized buckets	○	○
Ditching bucket	○	○
Ripper bucket	○	○
Backhoe bucket	○	○
Drilling attachment	○	○
Mechanical quick coupler	○	○
Concrete spray nozzle	○	○
Bow setting device	○	○
Single-point lifting bail	○	○
Porous plug pusher	○	○
Tap hole drill	○	○
EBT-drill	○	○

Key: ● Standard ○ Option

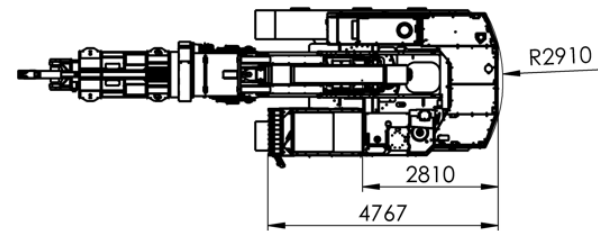
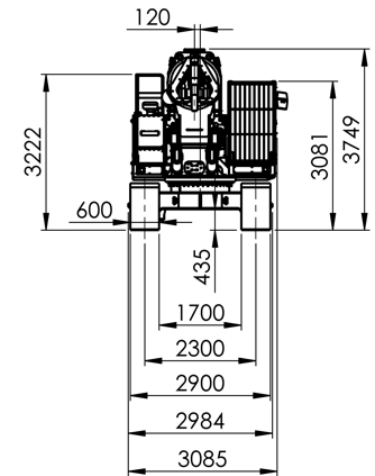
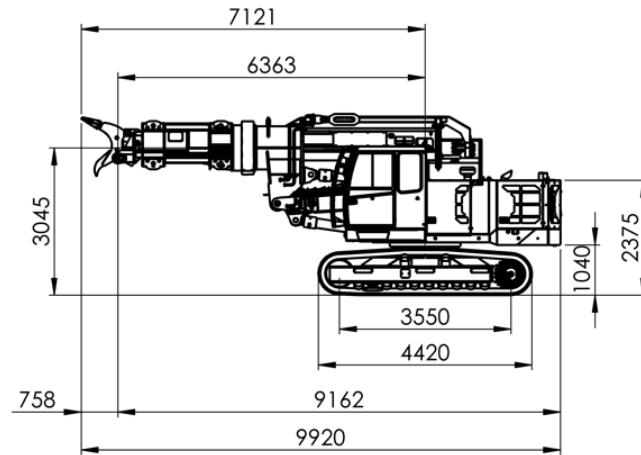
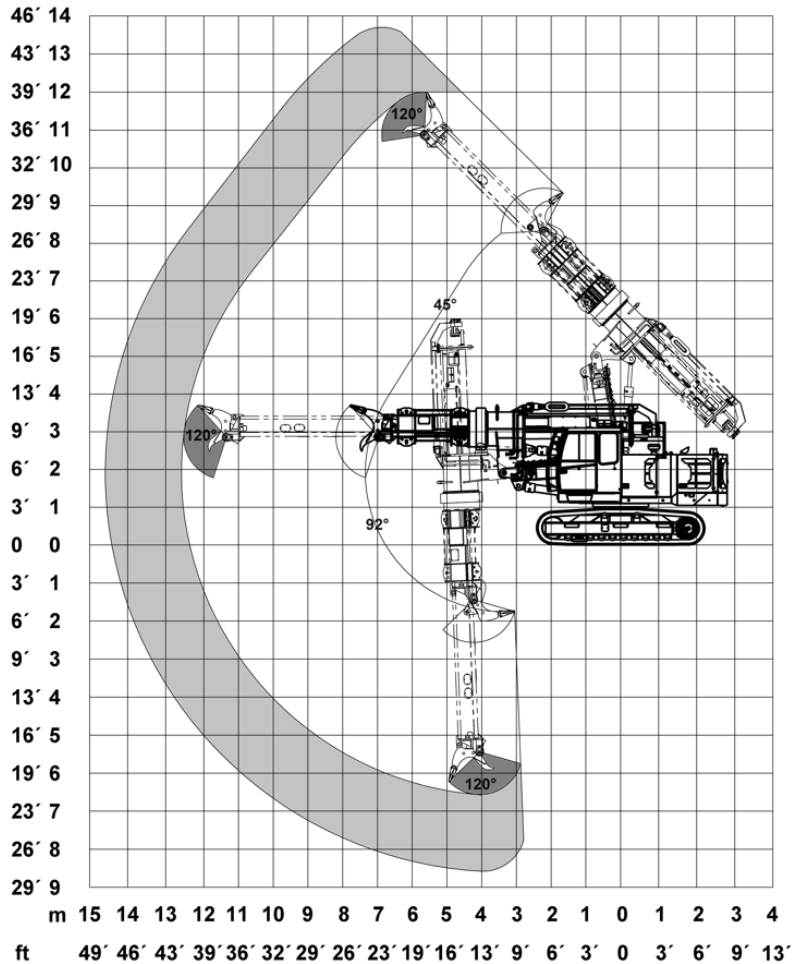
740

» Kinematics and dimensions



740K

» Kinematics and dimensions



736K

» Kinematics and dimensions

